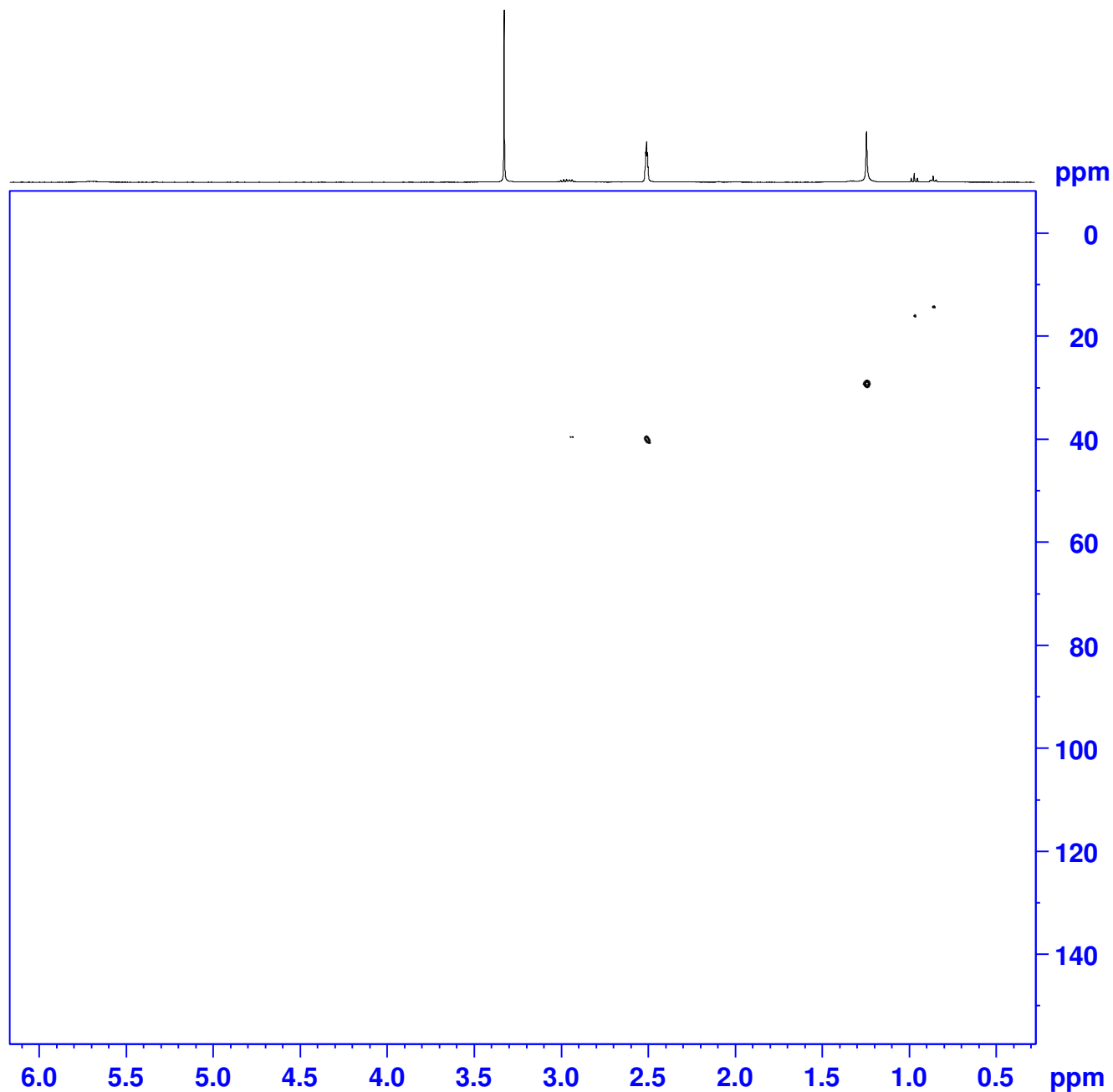


AVIIH400 [3]



Current Data Parameters
NAME dc0914fp1
EXPNO 12
PROCNO 1

F2 - Acquisition Parameters
Date_ 20141209
Time 17.48
INSTRUM spect
PROBHD 5 mm PABBO BB/
PULPROG hsqcetgp
TD 1024
SOLVENT DMSO
NS 2
DS 16
SWH 2358.490 Hz
FIDRES 2.303213 Hz
AQ 0.2170880 sec
RG 212.69
DW 212.000 usec
DE 6.50 usec
TE 298.1 K
CNST2 145.000000
D0 0.00000300 sec
D1 1.38142002 sec
D4 0.00172414 sec
D11 0.03000000 sec
D16 0.00020000 sec
IN0 0.00003000 sec
ZGPTNS

===== CHANNEL f1 =====
SFO1 400.1312891 MHz
NUC1 1H
P1 7.00 usec
P2 14.00 usec
P28 1000.00 usec
PLW1 32.00000000 W

===== CHANNEL f2 =====
SFO2 100.6202727 MHz
NUC2 13C
CPDPRG[2] garp
P3 7.97 usec
P4 15.94 usec
PCPD2 70.00 usec
PLW2 101.00000000 W
PLW12 1.39999998 W

===== GRADIENT CHANNEL =====
GPNAM[1] SMSQ10.100
GPNAM[2] SMSQ10.100
GPZ1 80.00 %
GPZ2 20.10 %
P16 1000.00 usec

F1 - Acquisition parameters
TD 256
SFO1 100.6203 MHz
FIDRES 65.104164 Hz
SW 165.639 ppm
FnMODE Echo-Antiecho

F2 - Processing parameters
SI 1024
SF 400.1300000 MHz
WDW QSINE
SSB 2
LB 0 Hz
GB 0
PC 1.40

F1 - Processing parameters
SI 1024
MC2 echo-antiecho
SF 100.6127690 MHz
WDW QSINE
SSB 2
LB 0 Hz
GB 0